

LEGEND

- △ NEW GPS SURVEY MONUMENTS
- ▲ EXISTING GPS SURVEY MONUMENTS AS NOTED
- ▲ EXISTING CA HPGN CONTROL STATIONS AS NOTED
- INDEPENDENT BASELINE VECTORS OBSERVED
- TRIVIAL BASELINE VECTORS OBSERVED
- COH88 CALIFORNIA ORTHOMETRIC HEIGHT 1988

SURVEYOR'S STATEMENT

THIS MAP CORRECTLY REPRESENTS A SURVEY MADE BY ME, OR UNDER MY DIRECTION, IN CONFORMANCE WITH THE REQUIREMENTS OF THE PROFESSIONAL LAND SURVEYOR'S ACT, AT THE REQUEST OF THE CITY OF LINCOLN IN JULY 2017.

ANDREGG PSOMAS

Dana J. Remington 11/16/2018
 DANA J. REMINGTON, LS 8448 DATE
 LICENSE EXPIRES 12/31/18



COUNTY SURVEYOR'S STATEMENT

THIS MAP HAS BEEN EXAMINED IN ACCORDANCE WITH SECTION 8766 OF THE PROFESSIONAL LAND SURVEYORS ACT THIS 20th DAY OF November, 2018.



BY: *Leslie Amberry* 11/29/18
 LESLIE AMBERRY, PLS 6584 DATE
 PLACER COUNTY SURVEYOR
 LICENSE EXPIRES: 12/31/2019

RECORDER'S STATEMENT

FILED THIS 21st DAY OF November, 2018 AT 14:42 P.M. IN BOOK 23 OF SURVEYS AT PAGE 155, PLACER COUNTY RECORDS, AT THE REQUEST OF ANDREGG PSOMAS.

FEE: \$ 0.00

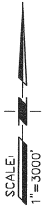
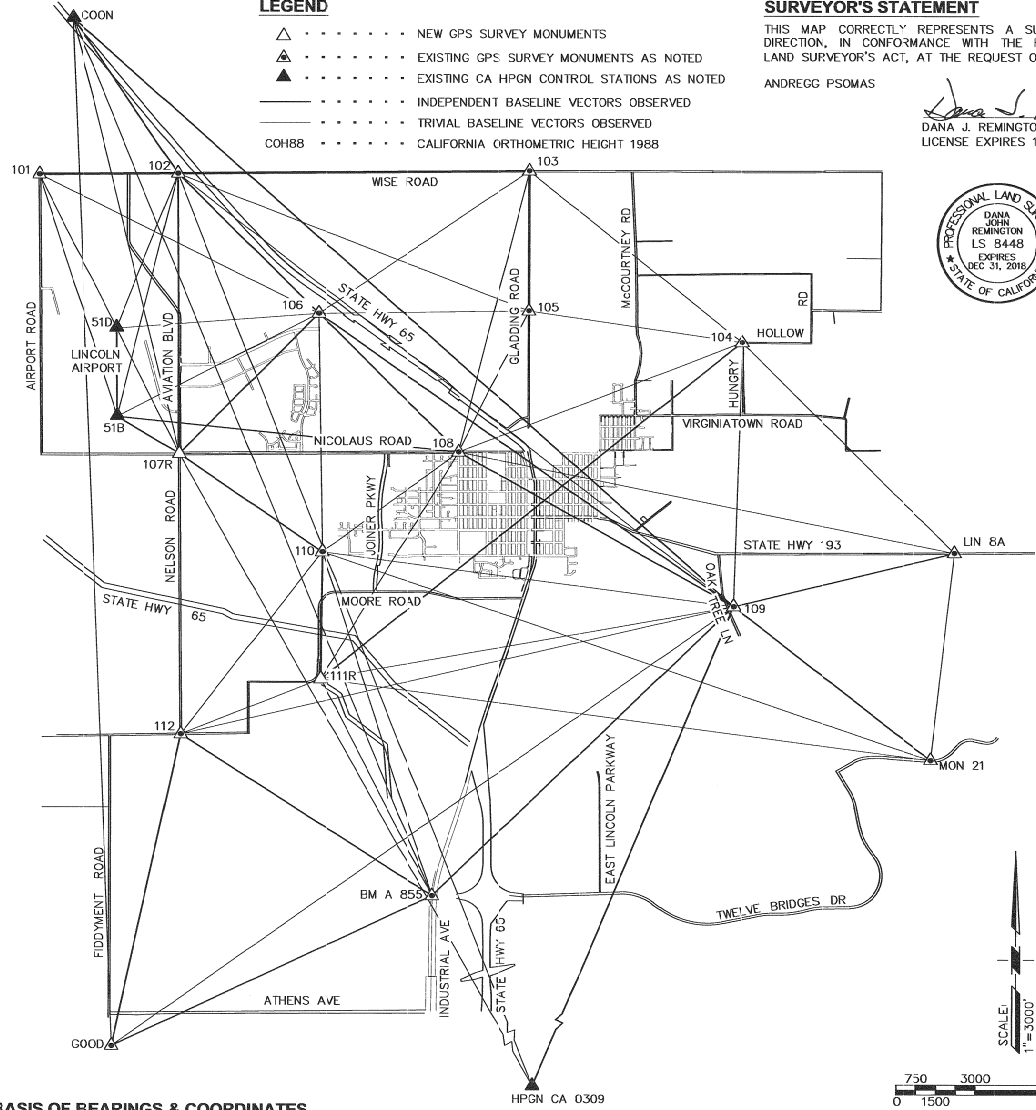
RYAN RONCO
 PLACER COUNTY RECORDER

DOC NO: 2018-0085017

BY: *J.M.*
 DEPUTY

NOTES

1. PURPOSE OF THIS SURVEY IS TO UPDATE FROM NGVD29(20 RS 159) TO NAVD88 AND UPDATE POINTS 107 AND 111(20 RS 159)(SET BY OTHERS) AND CONFIRM POINT 106. TO UPDATE THE VERTICAL DATUM ANDREGG PSOMAS READJUSTED THE GPS NETWORK USING NAVD88 PUBLISHED CONTROL VALUES OF BM A 855, BM V 1446, BM 2201, BM R854, BM 81435, BM U 854 RESET BM Z853, COON, HPGN0309, GEOID12B MODELING, AND READJUSTED THE PREVIOUS DIGITAL LEVEL LOOP RUNS WITH PUBLISHED NAVD88 BENCHMARKS.
2. THE COORDINATES SHOWN ON THIS MAP ARE BASED ON THE 1992 CALIFORNIA HIGH PRECISION GEODETIC NETWORK (HPGN)(EPOCH 1991.35) ADJUSTMENT OF THE NORTH AMERICAN DATUM OF 1983(NAD83). DISTANCES SHOWN ON THIS MAP, OR COMPUTED FROM THE COORDINATES SHOWN HEREON ARE "GRID DISTANCES", AND SHOULD BE CONVERTED TO "GROUND" DISTANCES IN ORDER TO BE COMPATIBLE WITH MEASUREMENTS MADE ON THE GROUND USING CONVENTIONAL SURVEYING TECHNIQUES. TO OBTAIN "GROUND" DISTANCES, DIVIDE THE "GRID" DISTANCE BY THE "COMBINATION FACTOR". TO OBTAIN "GRID" DISTANCES, MULTIPLY THE "GROUND" DISTANCE BY THE "COMBINATION FACTOR". COMINATION FACTORS FOR EACH POINT ARE INCLUDED IN THE COORDINATE LISTINGS.
3. THIS RECORD OF SURVEY IS INTENDED TO BE A MONUMENTATION MAP ONLY. IT DOES NOT DEFINE PROPERTY BOUNDARY LOCATIONS. THE SOLE PURPOSE IS TO ESTABLISH A PRIMARY HORIZONTAL AND VERTICAL CONTROL NETWORK FOR THE CITY OF LINCOLN, CONSTRAINED TO THE CALIFORNIA HIGH PRECISION GEODETIC NETWORK, USING GLOBAL POSITIONING SURVEY TECHNIQUES, AND CONSTRAINED TO NORTH AMERICAN VERTICAL DATUM OF 1988(NAVD88), AND SHOW THE LOCATION AND DESCRIPTION OF MONUMENTS FOUND OR SET, ALONG WITH THE NAD83-1992 STATE PLANE COORDINATES DETERMINED FOR THE MONUMENTS.
4. THE VECTOR SOLUTIONS WERE POST PROCESSED USING TRIMBLE BUSINESS CENTER v4.00, THE LEAST SQUARES NETWORK ADJUSTMENT WAS PERFORMED USING STARNET PRO SOFTWARE V9.0.3.6298, AND CONSTRAINED TO THE 1992(EPOCH 1991.35) ADJUSTMENT OF THE CA HPGN NAD83 PUBLISHED COORDINATES.
5. A COMPLETE REPORT OF THE ORIGINAL GPS SURVEY COMPLETED IN NOVEMBER 2000, IS AVAILABLE FOR REVIEW AT THE CITY OF LINCOLN DEPARTMENT OF PUBLIC WORKS AND AT THE PLACER COUNTY SURVEYORS OFFICE.
6. COORDINATES AND DESCRIPTIONS FOR ALL POINTS SHOWN HEREON ARE LISTED IN TABLES ON SHEET 2.



BASIS OF BEARINGS & COORDINATES

THIS SURVEY ESTABLISHES THE BASIS OF BEARING FOR THE HORIZONTAL CONTROL NETWORK OF PLACER COUNTY IN THE CITY OF LINCOLN AS DEFINED BY THE 1992(EPOCH 1991.35) ADJUSTMENT OF THE CA HPGN NAD83, HOLDING THE FOLLOWING STATIONS AS FIXED.

NGS PID	STATION NAME	NORTHING(ft)	EASTING(ft)	NORTHING(m)	EASTING(m)	LATITUDE	LONGITUDE	CONVERGENCE	COMBINATION FACTOR
.S4144	COON	2105759.70	6745448.8	641836.839	2055016.910	38°56'33.43716"N	121°21'13.72877"W	0°24'26.6"	0.99991459
.S4669	HPGN CA 0309	2027707.83	6765269.87	618046.584	2062058.379	38°43'40.44455"N	121°17'10.60727"W	0°26'59.9"	0.99993059

N:\ANDREGG\1115203\dwg\1115203ROS.dwg

RECORD OF SURVEY NO. EDS18-00309
CITY OF LINCOLN
G.P.S. CONTROL NETWORK
PORTIONS OF SECTIONS
4, 5, 8, 9, 10, 11, 13, 14, 15, 16, 17, 20,
21, 22, 23, 24, 27, 28, 29 & 30,
T. 12 N., R. 6 E., M.D.M.
PLACER COUNTY, CALIFORNIA
SCALE: 1"=3000' NOVEMBER 2018



CITY OF LINCOLN CONTROL NETWORK

STATION DESCRIPTIONS, LOCATIONS AND COORDINATES

Table listing station IDs, monument and location descriptions, and coordinates for various survey points.

NAD83 (HPGN 1992) - NAVD88 BM A 855 COH88 (EL = 130.210 FEET)

CALIFORNIA STATE PLANE ZONE 2 - METERS AND U.S. SURVEY FEET

Main data table for NAD83 (HPGN 1992) - NAVD88 BM A 855 COH88, listing station names, latitudes, longitudes, and elevations.

MEAN COMBINATION FACTOR = 0.99991739

NAD83 (HPGN 1992) - NGVD29 BM A 855 (EL = 127.877 FEET)

CALIFORNIA STATE PLANE ZONE 2 - METERS AND U.S. SURVEY FEET

Main data table for NAD83 (HPGN 1992) - NGVD29 BM A 855, listing station names, latitudes, longitudes, and elevations.

MEAN COMBINATION FACTOR = 0.99991720

NOTES

- List of notes regarding orthometric heights, GPS observations, and data processing.

RECORD OF SURVEY NO. ESD18-00309

CITY OF LINCOLN

G.P.S. CONTROL NETWORK

PORTIONS OF SECTIONS

4, 5, 8, 9, 10, 11, 13, 14, 15, 16, 17, 20, 21, 22, 23, 24, 27, 28, 29 & 30,

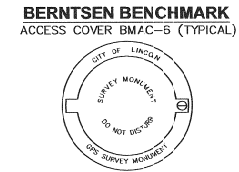
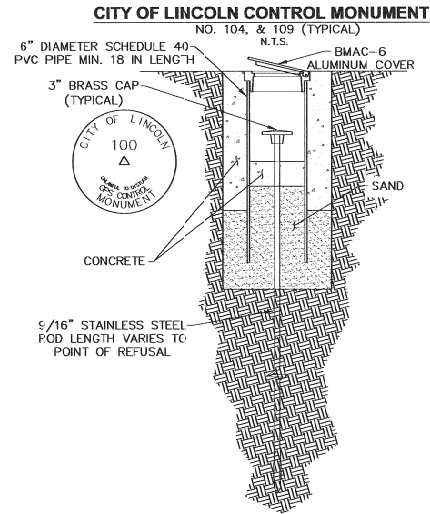
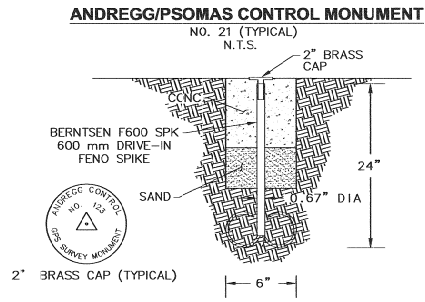
T. 12 N., R. 6 E., M.D.M.

PLACER COUNTY, CALIFORNIA

NOVEMBER 2018



ANDREGG PSOMAS



RECORD OF SURVEY NO. ESD18-00309
CITY OF LINCOLN
 G.P.S. CONTROL NETWORK
 PORTIONS OF SECTIONS
 4, 5, 8, 9, 10, 11, 13, 14, 15, 16, 17, 20,
 21, 22, 23, 24, 27, 28, 29 & 30,
 T. 12 N., R. 6 E., M.D.M.
 PLACER COUNTY, CALIFORNIA
 NOVEMBER 2018

