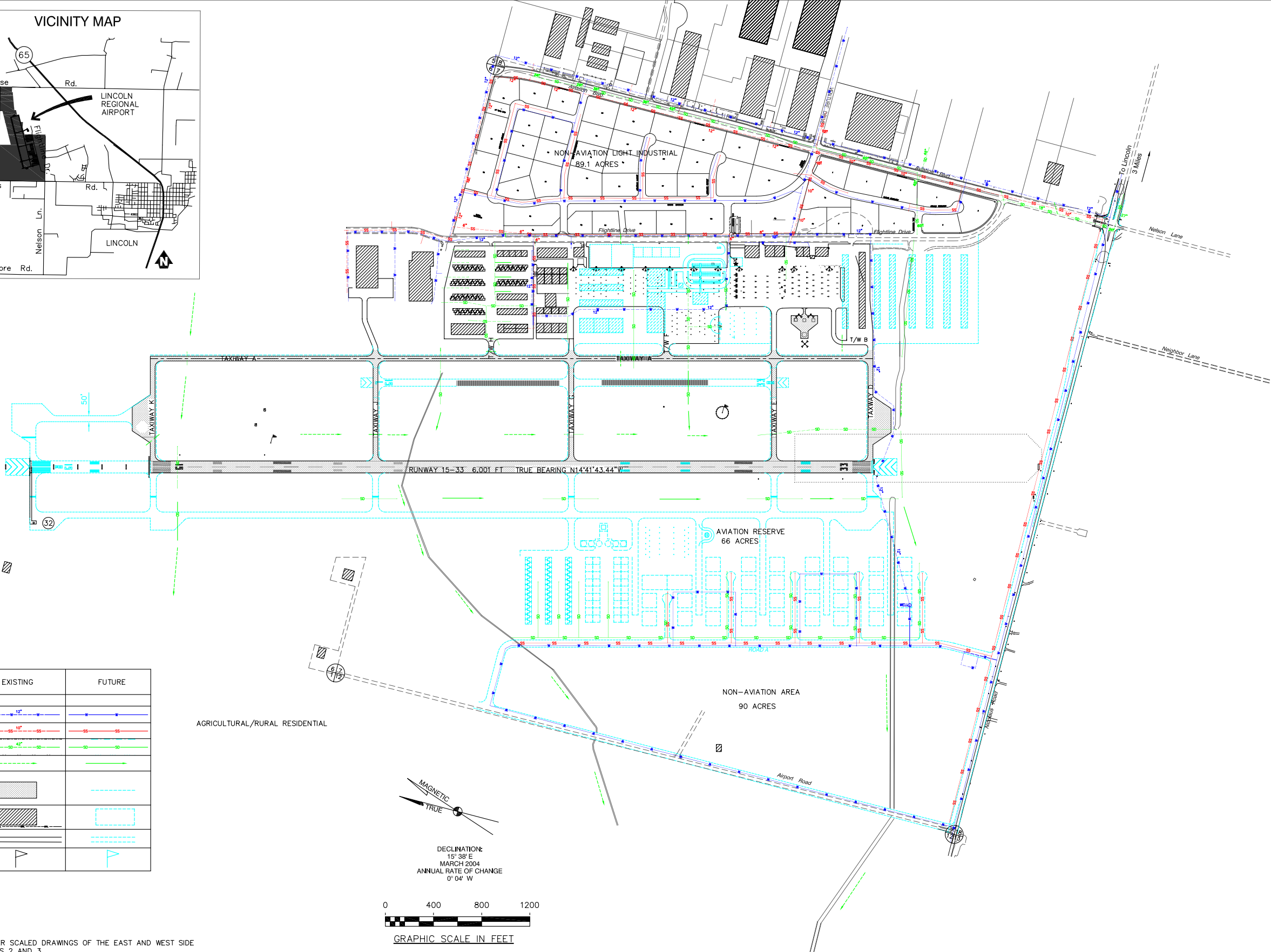
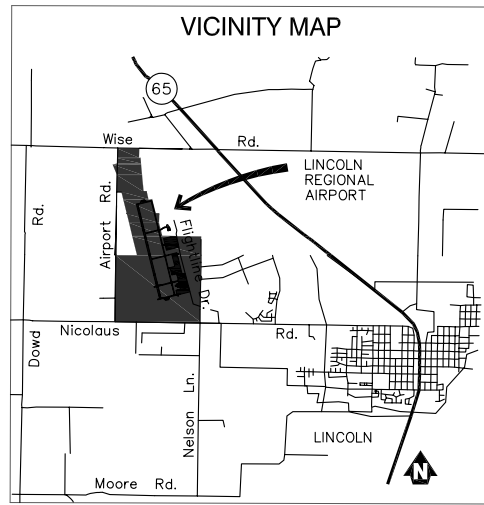
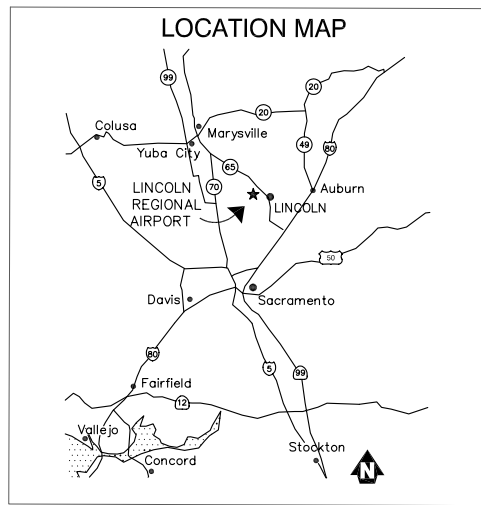


CHAPTER 10. UTILITIES AND DRAINAGE

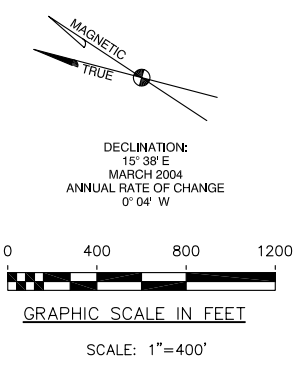
Preliminary Utility and Drainage Master Plans have been prepared to show extent and probable location of the major features. Detailed sizing and location of these utility and drainage lines will be finalized during design of each development. These plans are for the purpose of identifying location and extent of the major facilities.

The Preliminary Utility and Drainage Master Plans are included separately.



LEGEND	EXISTING	FUTURE
WATER LINE & SIZE		
SANITARY SEWER & SIZE		
STORM DRAIN LINE & SIZE		
OPEN CHANNEL FLOW		
AIRFIELD PAVEMENT AIRCRAFT MOVEMENT AREA		
FACILITIES		
ROAD (PAVED)		
SUPPLEMENTAL WINDCONE		

NOTES:
1. FOR LARGER SCALED DRAWINGS OF THE EAST AND WEST SIDE SEE SHEETS 2 AND 3



FAA DISCLAIMER
THE CONTENTS DO NOT NECESSARILY REFLECT THE OFFICIAL VIEWS OR POLICY OF THE FAA. ACCEPTANCE OF THIS PLAN BY THE FAA DOES NOT IN ANY WAY CONSTITUTE A COMMITMENT ON THE PART OF THE UNITED STATES TO PARTICIPATE IN ANY DEVELOPMENT DEPICTED THEREIN NOR DOES IT INDICATE THAT THE PROPOSED DEVELOPMENT IS ENVIRONMENTALLY ACCEPTABLE IN ACCORDANCE WITH APPROPRIATE PUBLIC LAWS.

DATE	NOV. 15, 2007
SHEET	1 OF 3
NUMBER	SHEETS

APPROVED _____ DATE _____
FAA



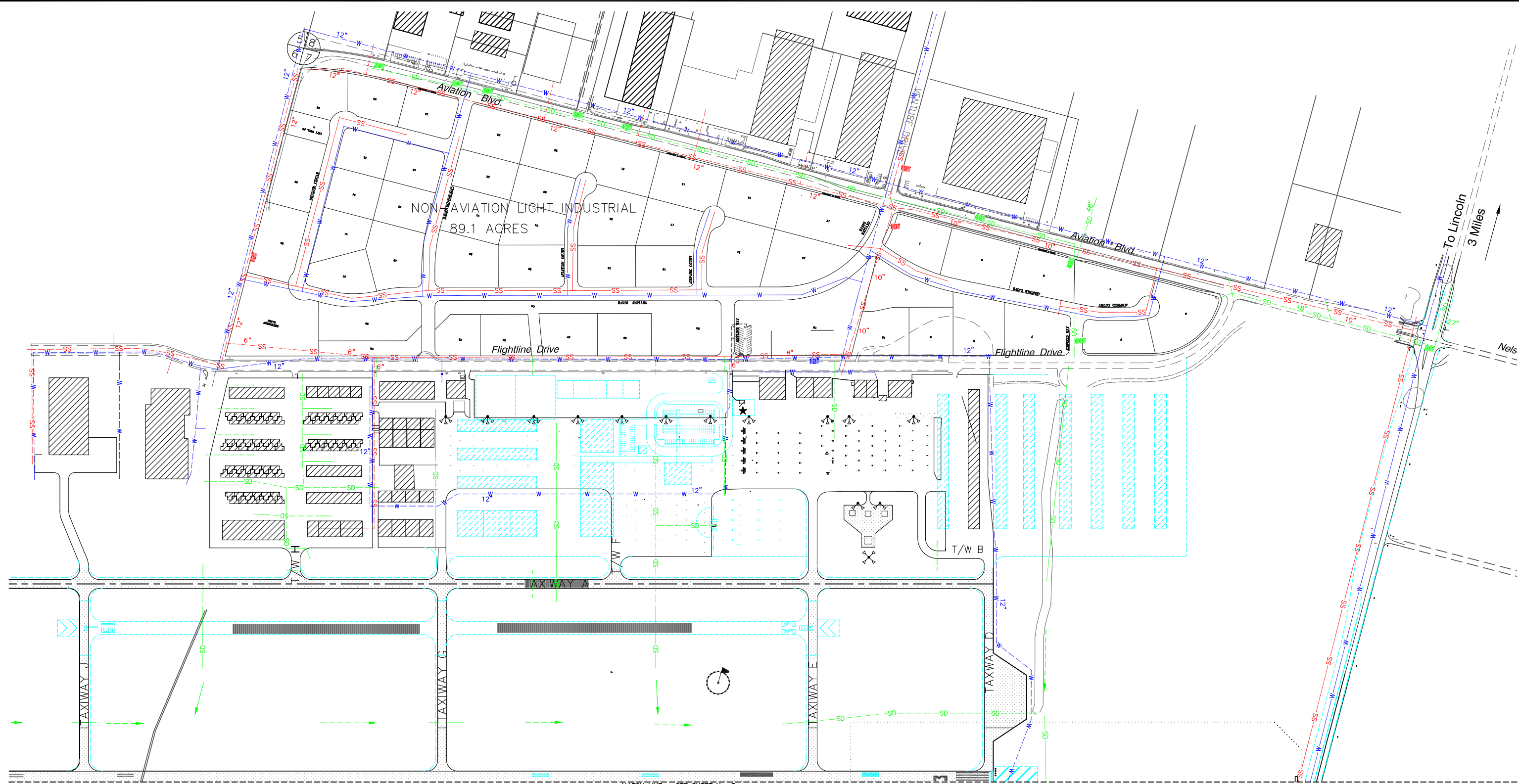
APPROVED _____ DATE _____
AIRPORT MANAGER



Reinard W. Brandley
CONSULTING AIRPORT ENGINEER
6125 King Road, Suite 201 • Loomis, California 95650 • (916) 652-4725

PLACER COUNTY
STATE OF CALIFORNIA
LINCOLN REGIONAL AIRPORT
CITY OF LINCOLN, CALIFORNIA
OVERALL UTILITY & DRAINAGE PLAN

NO.	REVISIONS	BY	APR	DATE

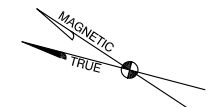


MATCH LINE - SEE SHEET No. 3

FAA DISCLAIMER
 THE CONTENTS DO NOT NECESSARILY REFLECT THE OFFICIAL VIEWS OR POLICY OF THE FAA. ACCEPTANCE OF THIS PLAN BY THE FAA DOES NOT IN ANY WAY CONSTITUTE A COMMITMENT ON THE PART OF THE UNITED STATES TO PARTICIPATE IN ANY DEVELOPMENT DEPICTED THEREIN NOR DOES IT INDICATE THAT THE PROPOSED DEVELOPMENT IS ENVIRONMENTALLY ACCEPTABLE IN ACCORDANCE WITH APPROPRIATE PUBLIC LAWS.

LEGEND	EXISTING	FUTURE
WATER LINE & SIZE	12" W	W
SANITARY SEWER & SIZE	10" SS	SS
STORM DRAIN LINE & SIZE	42" SD	SD
OPEN CHANNEL FLOW	→	→

LEGEND	EXISTING	FUTURE
AIRFIELD PAVEMENT	[Hatched Box]	[Dashed Box]
AIRCRAFT MOVEMENT AREA	[Hatched Box]	[Dashed Box]
FACILITIES	[Hatched Box]	[Dashed Box]
ROAD (PAVED)	[Double Line]	[Dashed Double Line]



DECLINATION:
 15° 38' E
 MARCH 2004
 ANNUAL RATE OF CHANGE
 0° 04' W



GRAPHIC SCALE IN FEET

SCALE: 1"=200'

DATE	NOV. 15, 2007
SHEET	2 OF 3
NUMBER	SHEETS

APPROVED _____ DATE _____
 FAA



APPROVED _____ DATE _____
 AIRPORT MANAGER



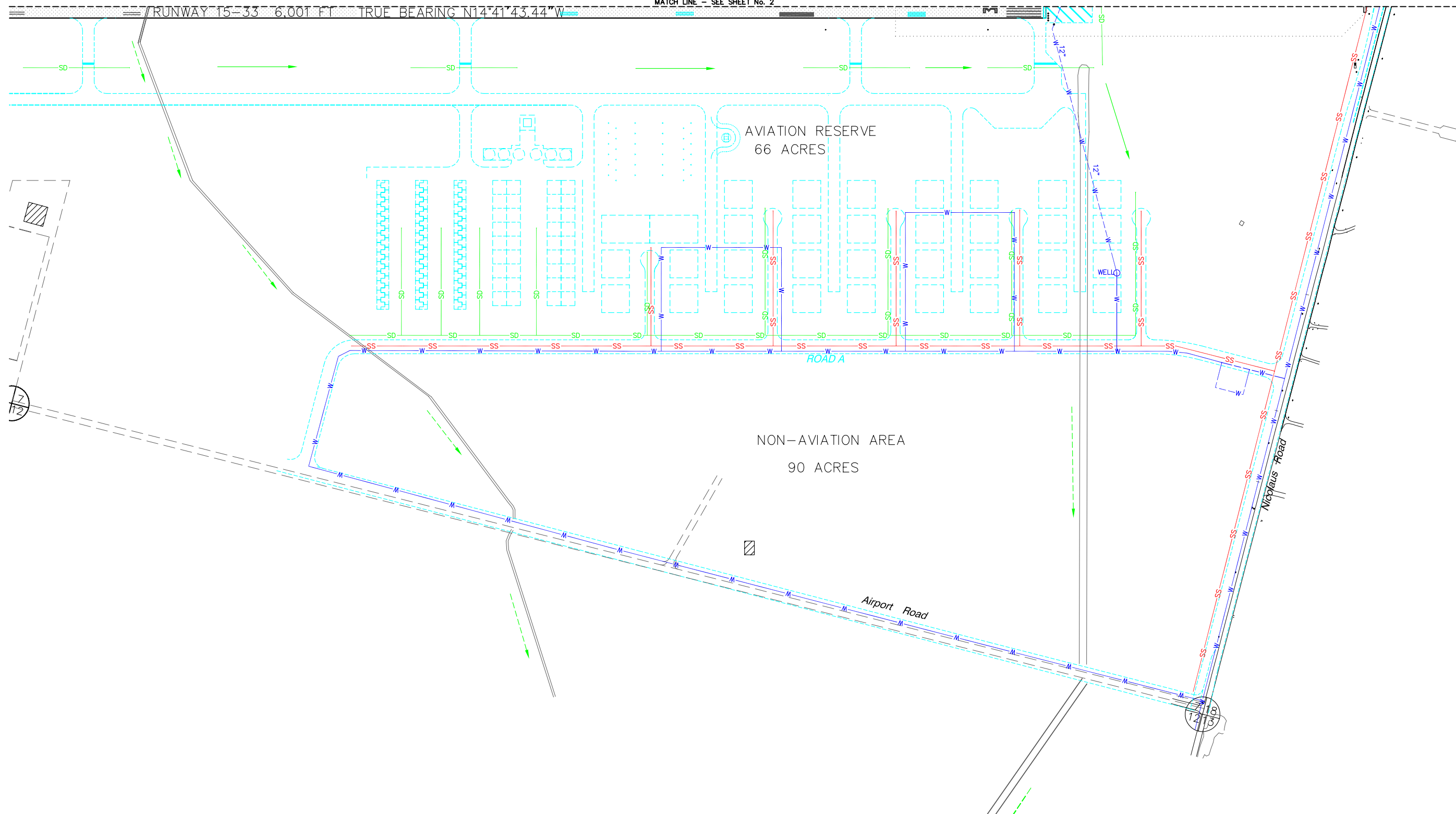
Reinard W. Brandley
 CONSULTING AIRPORT ENGINEER
 6125 King Road, Suite 201 • Loomis, California 95650 • (916) 652-4725

PLACER COUNTY
 STATE OF CALIFORNIA
LINCOLN REGIONAL AIRPORT
 CITY OF LINCOLN, CALIFORNIA
UTILITY & DRAINAGE PLAN - EAST SIDE DEVELOPMENT

NO.	REVISIONS	BY	APR	DATE

RUNWAY 15-33 6,001 FT TRUE BEARING N14°41'43.44"W

MATCH LINE - SEE SHEET No. 2



FAA DISCLAIMER
 THE CONTENTS DO NOT NECESSARILY REFLECT THE OFFICIAL VIEWS OR POLICY OF THE FAA. ACCEPTANCE OF THIS PLAN BY THE FAA DOES NOT IN ANY WAY CONSTITUTE A COMMITMENT ON THE PART OF THE UNITED STATES TO PARTICIPATE IN ANY DEVELOPMENT DEPICTED THEREIN NOR DOES IT INDICATE THAT THE PROPOSED DEVELOPMENT IS ENVIRONMENTALLY ACCEPTABLE IN ACCORDANCE WITH APPROPRIATE PUBLIC LAWS.

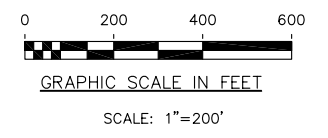
LEGEND

	EXISTING	FUTURE
WATER LINE & SIZE	12" W	W
SANITARY SEWER & SIZE	10" SS	SS
STORM DRAIN LINE & SIZE	42" SD	SD
OPEN CHANNEL FLOW	→	→

LEGEND

	EXISTING	FUTURE
AIRFIELD PAVEMENT	[Hatched Box]	[Dashed Box]
AIRCRAFT MOVEMENT AREA	[Hatched Box]	[Dashed Box]
FACILITIES	[Hatched Box]	[Dashed Box]
ROAD (PAVED)	[Double Line]	[Dashed Double Line]

MAGNETIC
TRUE
 DECLINATION:
 15° 38' E
 MARCH 2004
 ANNUAL RATE OF CHANGE
 0° 04' W



DATE NOV. 15, 2007
 SHEET NUMBER 3 OF 3 SHEETS

NO.	REVISIONS	BY	APR	DATE



APPROVED _____ DATE _____
 AIRPORT MANAGER



6125 King Road, Suite 201 • Loomis, California 95650 • (916) 652-4725
Relnard W. Brandley
 CONSULTING AIRPORT ENGINEER

PLACER COUNTY
 STATE OF CALIFORNIA
LINCOLN REGIONAL AIRPORT
 CITY OF LINCOLN, CALIFORNIA
UTILITY & DRAINAGE PLAN - WEST SIDE DEVELOPMENT